



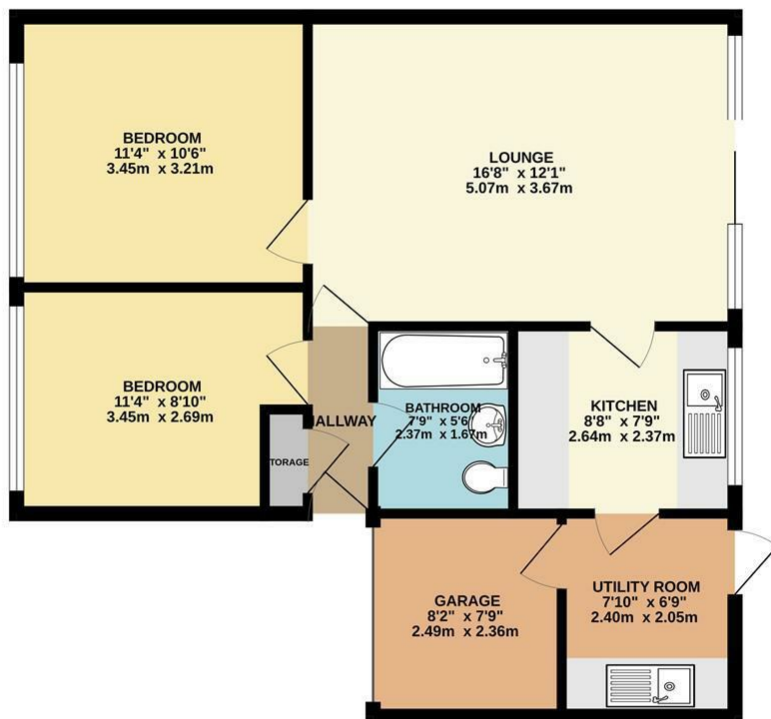
EDEN MIDCALF
— SALES & LETTINGS —

PER CALENDAR MONTH

£925 Per Calendar Month
Grosvenor Wood

Bewdley, DY12 2HY

GROUND FLOOR
653 sq.ft. (60.7 sq.m.) approx.



TOTAL FLOOR AREA: 653 sq.ft. (60.7 sq.m.) approx.
Whilst every attempt has been made to ensure the accuracy of the floorplan contained here, measurements of doors, windows, rooms and any other items are approximate and no responsibility is taken for any error, omission or mis-statement. This plan is for illustrative purposes only and should be used as such by any prospective purchaser. The services, systems and appliances shown have not been tested and no guarantee as to their operability or efficiency can be given.
Made with Metropix ©2023



Energy Efficiency Rating		
	Current	Potential
Very energy efficient - lower running costs		
(92 plus) A		86
(81-91) B		
(69-80) C		
(55-68) D	68	
(39-54) E		
(21-38) F		
(1-20) G		
Not energy efficient - higher running costs		
England & Wales		EU Directive 2002/91/EC

Agents Note: Whilst every care has been taken to prepare these particulars, they are for guidance purposes only. All measurements are approximate and are for general guidance purposes only and whilst every care has been taken to ensure their accuracy, they should not be relied upon and potential buyers/tenants are advised to recheck

EDEN MIDCALF
— SALES & LETTINGS —

42 Hagley Road
Stourbridge
West Midlands
DY8 1QD

01384 443434
lettings@edenmidcalf.co.uk
<https://www.edenmidcalf.co.uk/us/>